

CERTIFIED LAND CORNER RECORDATION

DESCRIPTION OF CORNER EVIDENCE FOUND, AND ORIGINAL RECORD (if known)

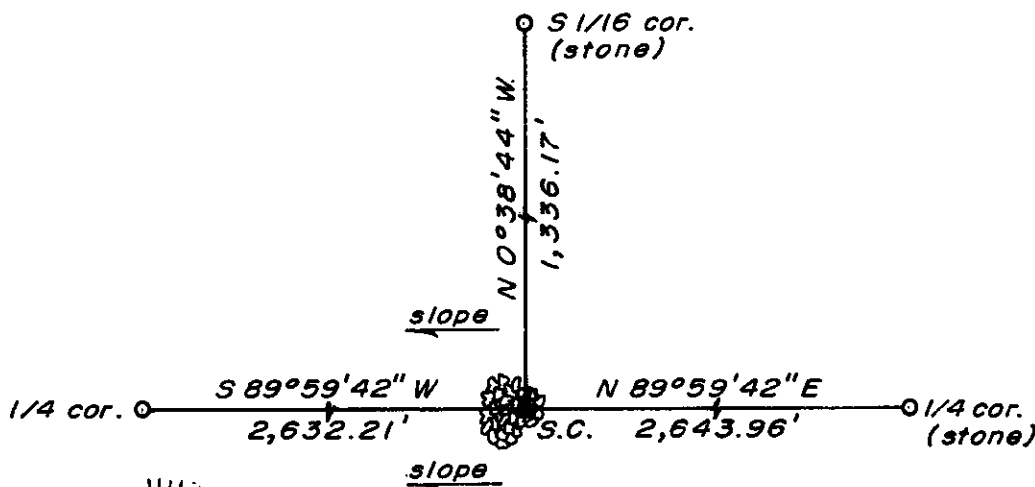
LOCATION No evidence of corner monument found. Corner position re-established by intersection of section line from north with township line between adjacent corners (1/4 corner of Secs. 32 and 5 and township corner).
 T.14N., R.65W. S.31 S.32
 S. 6 S. 5
 T.13N., R.65W. G.L.O. record - Unknown.
 6th P.M. Note: Corner falls on steep side slope.

DESCRIPTION OF MONUMENT AND ACCESSORIES ESTABLISHED TO PERPETUATE THE ORIGINAL LOCATION OF THIS CORNER:

At the corner: Set a 5/8" dia. x 24" long rebar with 2" dia. aluminum cap.
 Accessories: Set a 2" x 2" x 24" Pine post, painted red over white, one foot east of corner monument.
 Raised a rock mound around corner monument.

SKETCH, WITH COURSE AND DISTANCE TO ADJACENT CORNER IF DETERMINED IN THIS SURVEY.
 (May Sketch or Paste Reproduction on Reverse Side.)

Basis of Bearing: City of Cheyenne Datum.
 Distances based on measurements by electronic means.
 Coordinates: (City of Cheyenne Datum)
 (x) = 630,279.50 feet; (y) = 69,388.26 feet

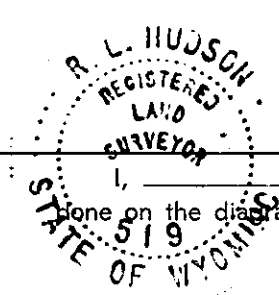


No scale

Aluminum cap stamped:

T.14N. R.65W.
 S.C.
 S.31 S.32
 S. 6 S. 5
 T.13N.

LS 519 1978



I, R.L. Hudson certify that I have carefully performed or reviewed the work done on the diagrammed corner as reported on this recordation form and approve the same.

R.L. Hudson Wyoming L.S. No. 519
 Signature of Surveyor Registration No.

STATE OF WYOMING,
 Office of Clerk and Recorder,
 County of Saravie

511168

This "corner record" was filed for record on the 21 day of December, 1978, was noted on the cross-index plat and is assigned page No. _____, in book No. _____.

James C. W. [Signature]
 County Official

Cross Index No. _____	T. _____	R. _____	Mer. _____
<u>2-5</u>	T. <u>14</u>	R. <u>65</u>	Mer. _____
<u>A-5</u>	T. <u>13</u>	R. <u>65</u>	Mer. _____
_____	T. _____	R. _____	Mer. _____
_____	T. _____	R. _____	Mer. _____
_____	T. _____	R. _____	Mer. _____
_____	T. _____	R. _____	Mer. _____

2-5 14-65

511168

Photographed
Indexed
Posted
Assessor